

Welcome to Pre-AP Chemistry!

It is essential that you work on these basics over the summer, so that we can start new material when the course begins. If you have ANY questions, please do not hesitate to email me (miriamfowler@celinaisd.com).

Navigate to and watch the following YouTube Lab Equipment and Lab Safety videos (Take notes as you watch).

Zombie College: The 5 Rules of Lab Safety

<https://www.youtube.com/watch?v=S6WARqVdWrE>

Chemistry Lab Equipment

<https://www.youtube.com/watch?v=sIplg1oVLEs>

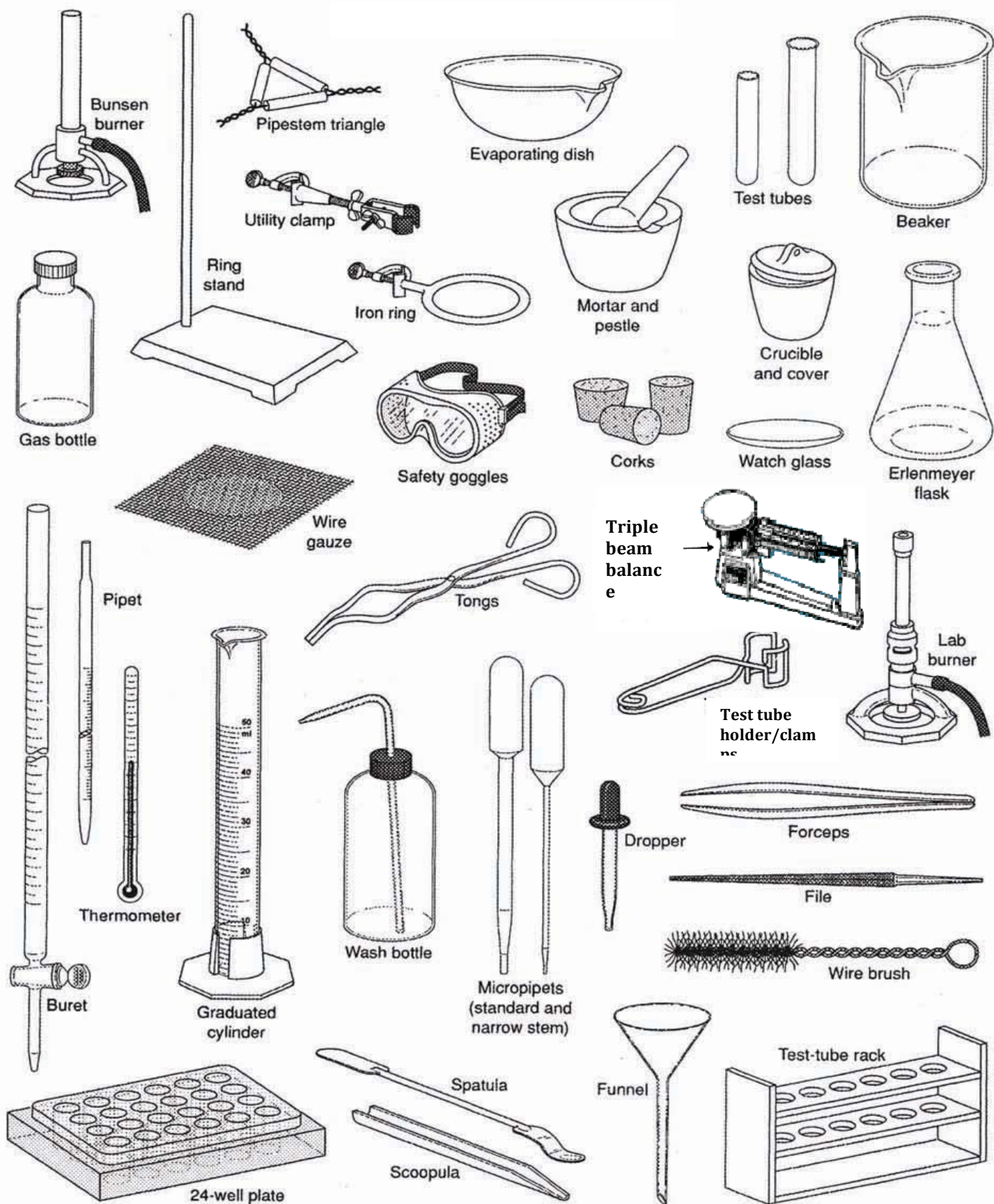
***** Test over lab safety and equipment first week of school.**

Introduction to the periodic table

<https://www.youtube.com/watch?v=uPkEGAHo78o>

All assignments are due on the first day of class (August 21st 2017).

Directions: A number of items that may be used in the laboratory are shown below. Study this page and decide what the items may be used for. Use the names of the equipment shown to answer the questions included.



Lab Equipment

Name each piece of equipment that would be useful for each of the following tasks:

1. Holding 100mL of water (ebkare)
2. Measuring 27 mL of liquid (daudgtear ldnreiyç)
3. Measuring exactly 43mL of an acid (rtube)
4. Massing out 120 g of sodium chloride (acbnela)
5. Suspending glassware over the Bunsen burner (rwei zeagu)
6. Used to pour liquids into containers with small openings or to hold filter paper (unfenl)
7. Mixing a small amount of chemicals together (lewl letpa)
8. Heating contents in a test tube (estt ubet smalcp)
9. Holding many test tubes filled with chemicals (estt ubet karc)
10. Used to clean the inside of test tubes or graduated cylinders (iwer srbuf)
11. Keeping liquid contents in a beaker from splattering (tahcw sgasl)
12. A narrow-mouthed container used to transport, heat or store substances, often used when a stopper is required (ymerereel kslaf)
13. Heating contents in the lab (nuesnb bneurr)
14. Transport a hot beaker (gntos)
15. Protects the eyes from flying objects or chemical splashes (ggloges)
16. Used to grind chemicals to powder (tmraor nda stlepe)

Directions: In the word search below are the names of several pieces of lab equipment. As you find each piece of equipment, record its name on the list.

G L X E L O V W F W F B Z A L M Q W V W Z C T L H
 F P V T E S T T U B E S J X I K C A N K Z K Y G S
 D B Y Q G E H Y R G K P Q R I N E S A H P X V G I
 P E H I I J Y C A M F S I R L L Z H S P Y Q G N D
 W H L V P D Y O A F X G I J B J F B M O J Q W R G
 T H E R M O M E T E R N P I Y S T O P P E R S T N
 J L S V H O A D D Y G K C R N B J T E Y M D N Y I
 E L T T O B S A G S N U A C O S U T L C W E I Z T
 D L W C H P M L T B R Z N Y T U B L I Y E D B G A
 M Q G B Y S A A K C W H I K D W V E F O B X L N R
 Z I I N D D N R W X Y F L Y R X C F J H N J V I O
 M M C A A D P B E L L Q M W D V H K Z E Z N L R P
 S O F R E I G D I N Q U U P G T T T M P Z S W N A
 W H Q B O V R C K H R P Q M F F D E I T S O S O V
 Z Z Z T Z P Y T R L M U B Q B X D I P L U N G R E
 S C P F H Z I D M A S C B N D P O B Z I S G U I Q
 Q D P T R B F P L E Z C S B B L E A K Q P H F Q S
 X A P A I O C C E N T V O K A U Y Q H N W M Y D P
 Q X X W R V Y H Y T D S X O Q L I C X H Z V F E A
 B L Z C G T Y S M Z S F E U P V J Y F Y A I G R T
 P M E H I R E P P O R D J P L U O R N I B T S W U
 L P V L Q V W O A G B Z A V I Z L P I M S Q U Q L
 S S I H C K O M O W U A I Q L P N A U S I A C M A
 X T Q G F J O B N S E P C L O X C G G T B B B X V
 U F L M F C V M C W H W V L R O P V P W O M C D S

- | | |
|-----|-----|
| 1. | 11. |
| 2. | 12. |
| 3. | 13. |
| 4. | 14. |
| 5. | 15. |
| 6. | 16. |
| 7. | 17. |
| 8. | 18. |
| 9. | 19. |
| 10. | |

Practice QUIZ for Element Symbols and Polyatomic Ions

Give the name or symbol for each of the following (spelling counts):

Zr		Fe		U	
Si		N		P	
Ni		Bi		Sn	
O		Se		Te	
Cs		V		Cd	
As		Cl		Ar	
S		Co		Be	
Ga		Pt		Hg	
Pb		Au		Ca	
At		Pt		Mg	
Fr		Te		Xe	
Copper		Zinc		Barium	
Seaborgium		Rubidium		Potassium	
Hydrogen		Uranium		Sn	
Cadmium		Manganese		Ytterium	
Astatine		Lithium		Plutonium	
Radium		Fluorine		Lanthanum	

Sodium		Tungsten		Scandium	
Strontium	Radon		Actinium	
Silver		Tin		Arsenic	
Thallium	..	Chromium		Boron	
Krypton		Thorium		Germanium	
SO ₄ ²⁻					
NH ₄ ¹⁺					
IO ₂ ¹⁻					
CN ¹⁻					
C ₂ H ₃ O ₂ ¹⁻					
NO ₃ ¹⁻					
CO ₂ ²⁻					
OH ¹⁻					
ClO ₄ ¹⁻					
CrO ₄ ²⁻					
PO ₄ ³⁻					

	Periodate
	Hydrogen carbonate
	Sulfite
	Ammonium
	Nitrite
	Dihydrogen phosphate
	Bisulfate
	Hypochlorite
	Fluorate
	Permanganate
	Bromate